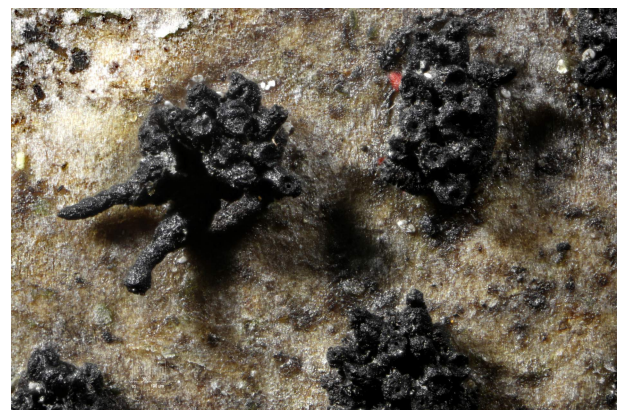
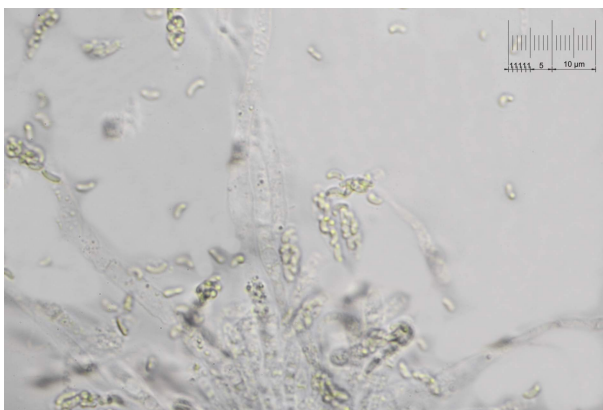
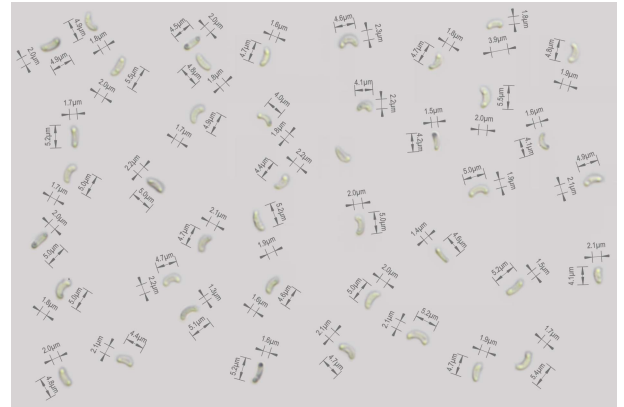
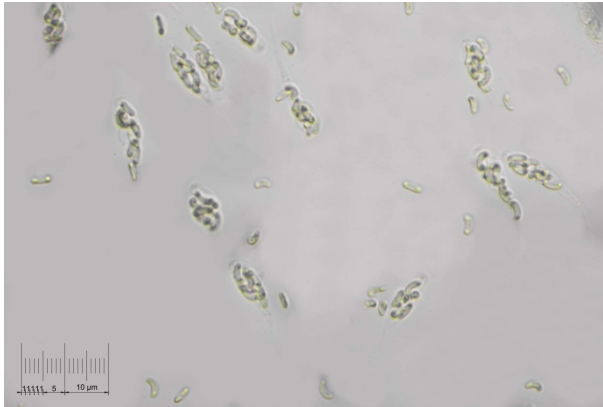


Peroneutypa scoparia (Schwein.) Carmarán & A.I. Romero 2006

Eutypella scoparia (Schwein.) Ellis & Everh. 1892, *Peroneutypa heteracantha* (Sacc.) Berl. 1921,

Valsa heteracantha Sacc. 1873

Schwarzes Robinien-Stachelbüschel



Lignicol an Laubholz

Sp. 3-4 x 1,2-1,7 µm